

Carpet tiles combine all the positive qualities of a carpeted floor in terms of acoustics, comfort and room climate.

The floor covering can be quickly partially replaced without having to relay the entire room.

Ease of handling when laying and transporting and their low cutting waste speak for themselves.

Through the interplay of different designs, structures and materials, carpet tiles offer fascinating design potential.



ETHNO

48 48 x 48 tiles



15004-A01



9055 9054 9053 7054 7051 9051

15004-A02



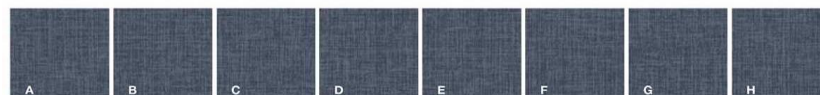
8073 8072 8071 7053 9062 8061

15004-A03



4058 3072 2070 4072 2057 2052

15005-A01



9055 9054 9053

15005-A02



8073 8072 8071

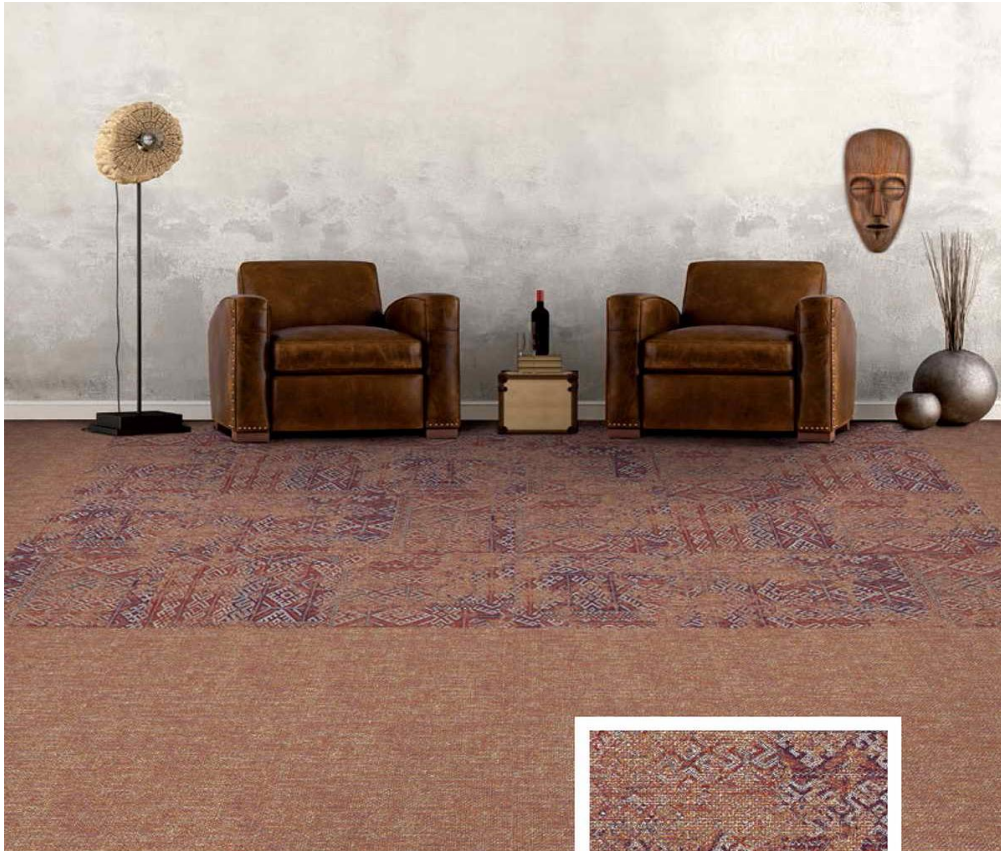
15005-A03



4058 3072 2070

DAS & TO

TILES



60 x 60 tiles

60

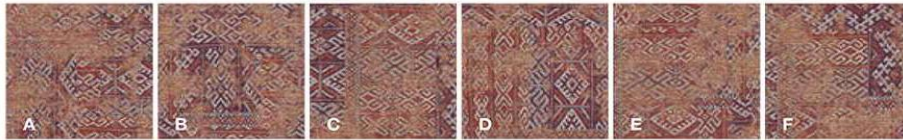


ETHNO

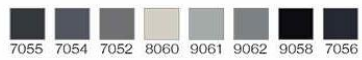
DAS & TO

TILES

15006-A01



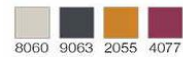
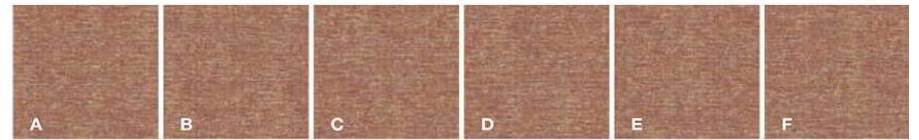
15006-A02



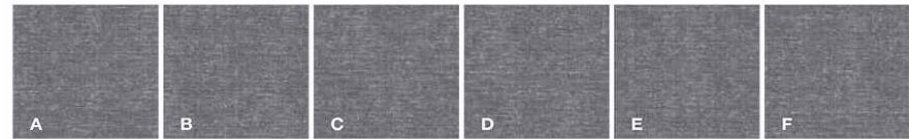
15006-A03



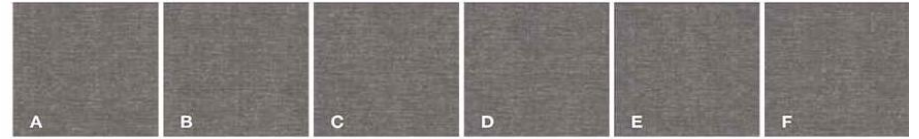
15007-A01



15007-A02



15007-A03



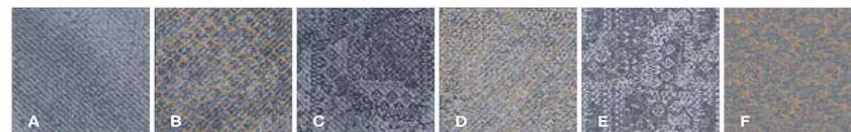


ETHNO

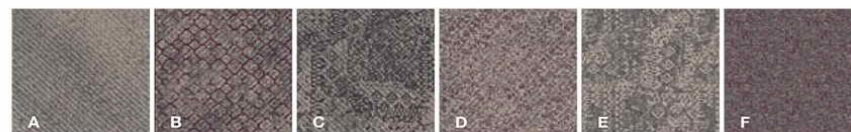
60 x 60 tiles

60

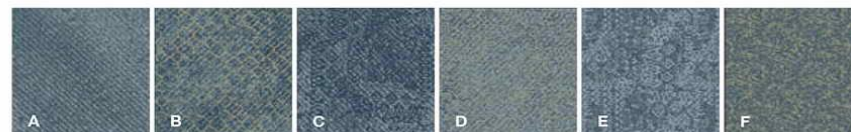
15002-A01



15002-A02



15002-A03



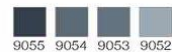
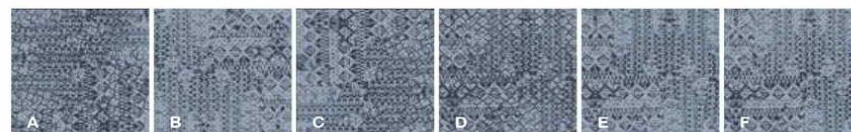
ETHNO

60 x 60 tiles

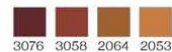
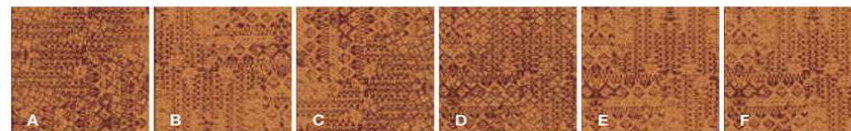
60



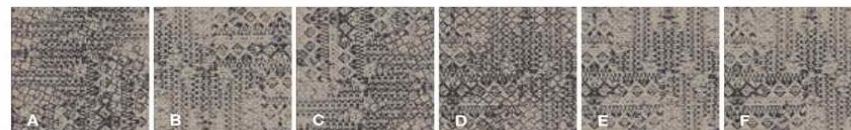
15000-A01



15000-A02



15000-A03

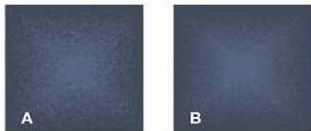


RETRO

48 x 48 tiles

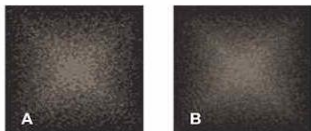
48

15030-A01



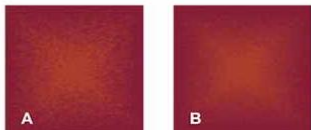
9055 5054

15030-A02



9060 8064

15030-A03



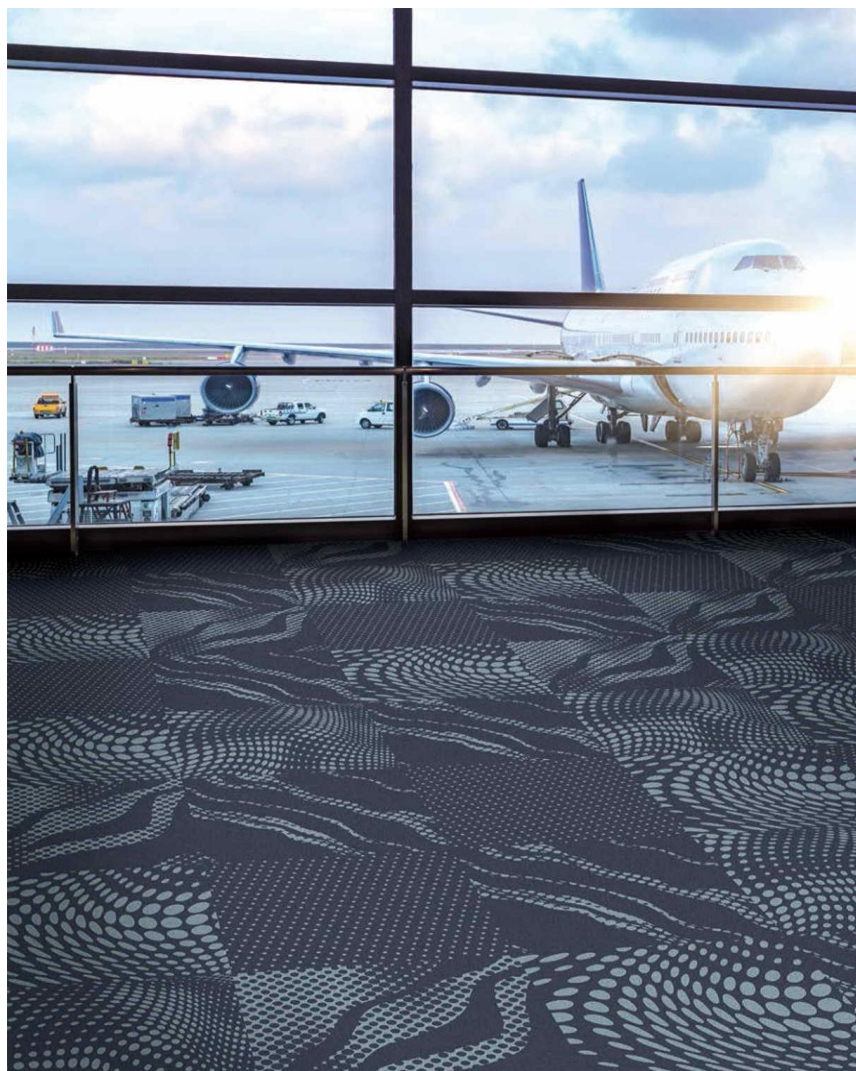
4057 2070



RETRO

60 x 60 tiles

60



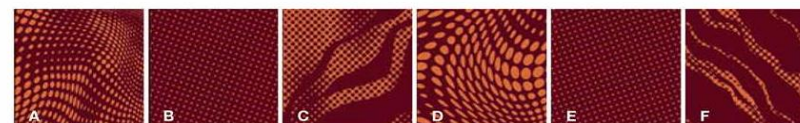
15026-A01



15026-A02



15026-A03



RETRO

60 x 60 tiles

60

15032-A01



9060 7053

15032-A02

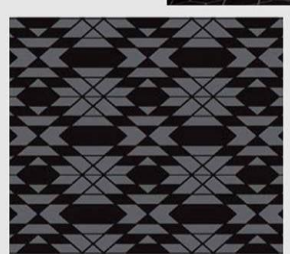
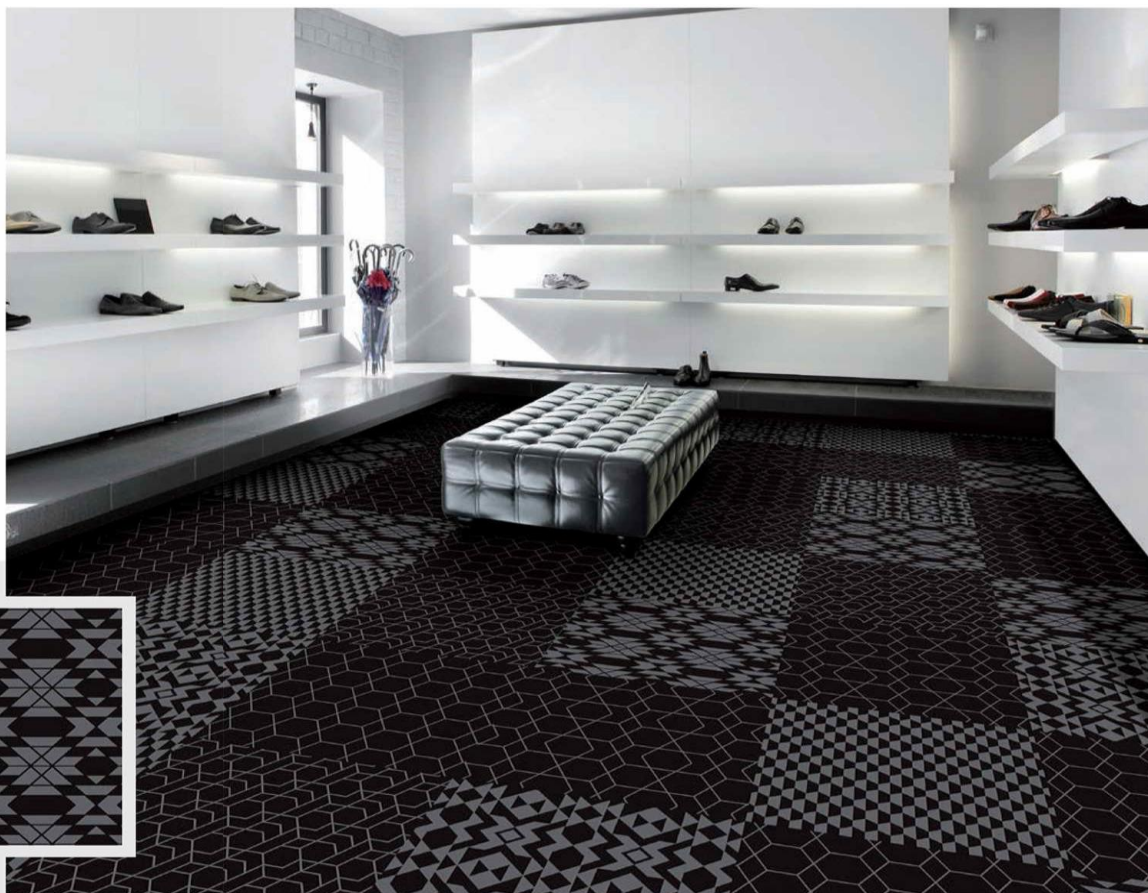


5078 6056

15032-A03



3083 8071



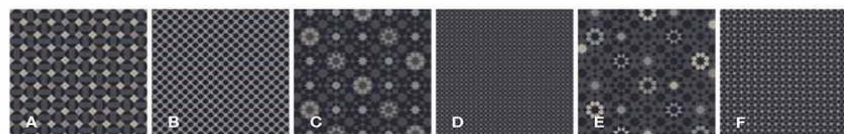
RETRO

60 x 60 tiles

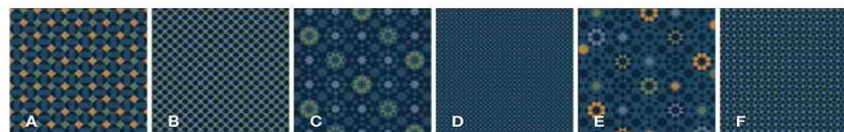
60



15028-A01



15028-A02



15028-A03



RETRO

48

48 x 48 tiles



RETRO

48 x 48 tiles

48

15024-A01



15024-A02



15024-A03



RETRO

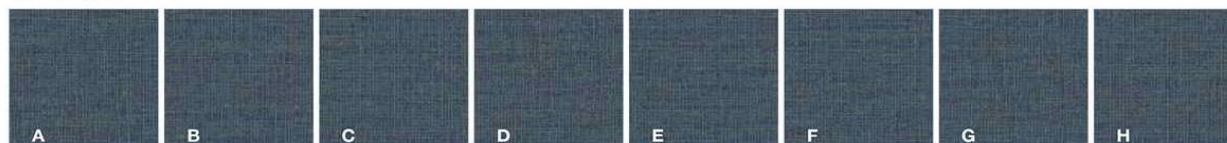
48 x 48 tiles

48

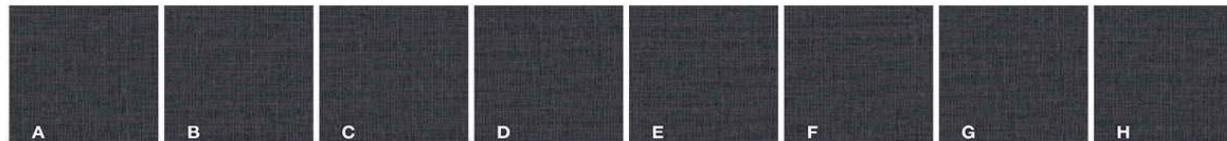
15025-A01



15025-A02



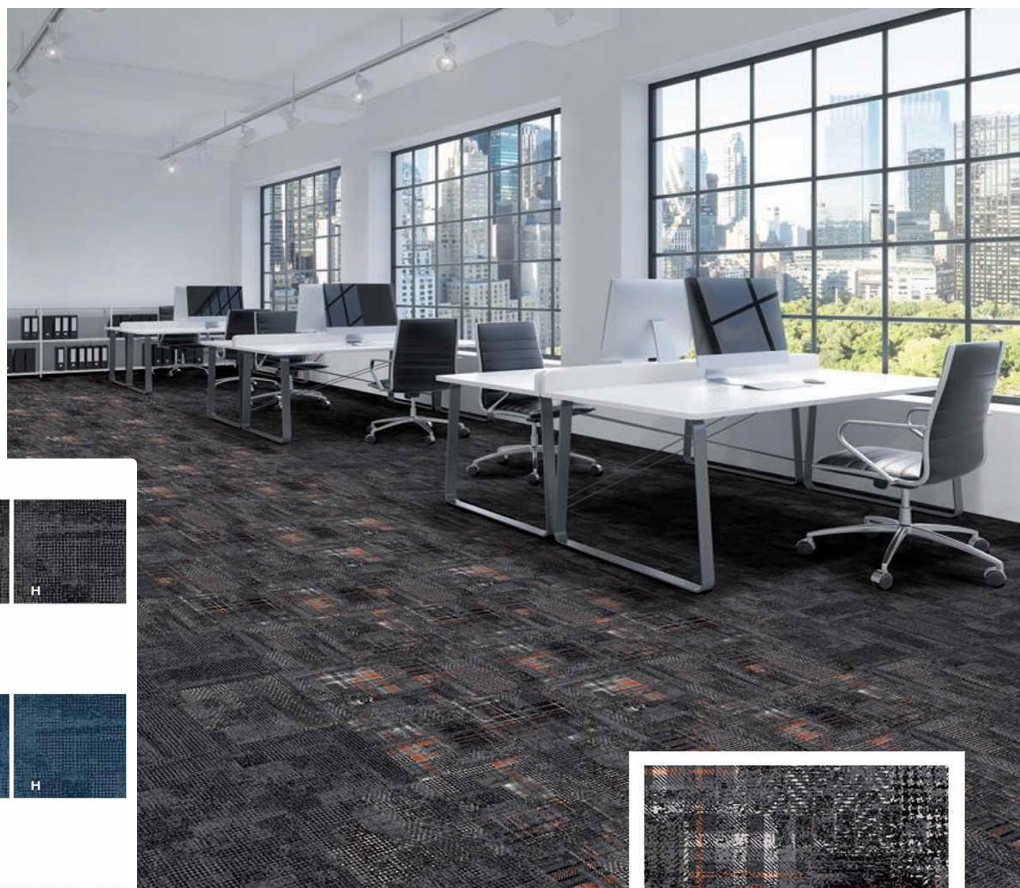
15025-A03



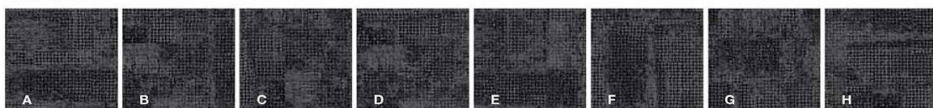
FRAGMENTS

48

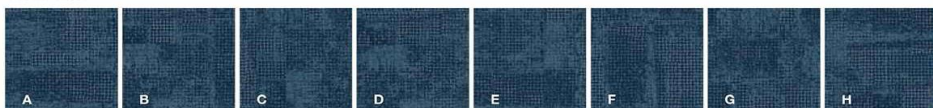
48 x 48 tiles



15019-A01



15019-A02



15019-A03



FRAGMENTS

48

48 x 48 tiles

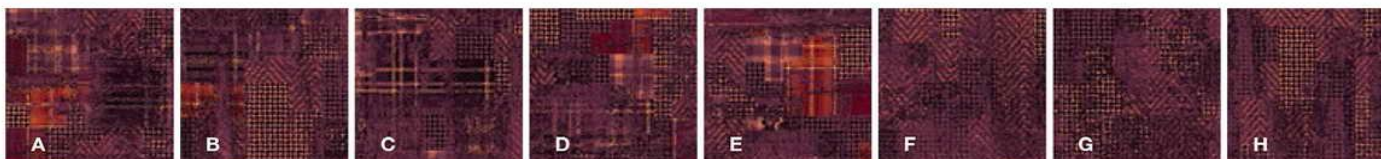
15018-A01



15018-A02



15018-A03



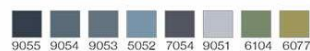


TEXTILE

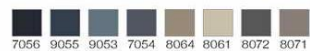
60 x 60 tiles

60

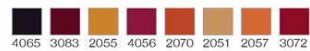
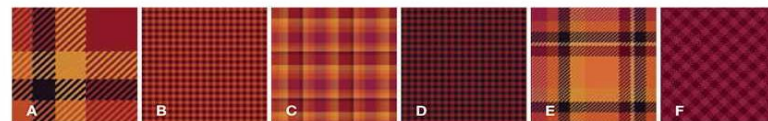
15052-A01



15052-A02



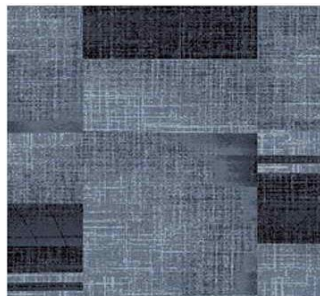
15052-A03



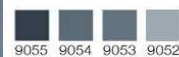
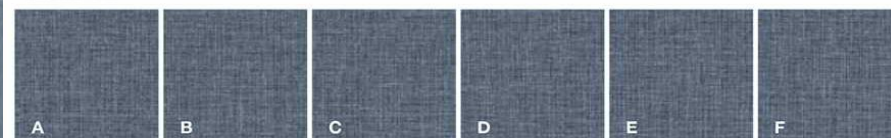
TEXTILE

60

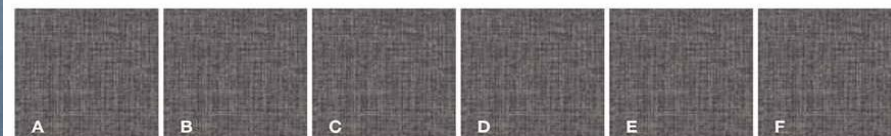
60 x 60 tiles



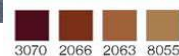
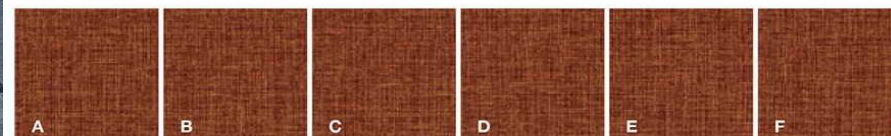
15059-A01



15059-A02



15059-A03

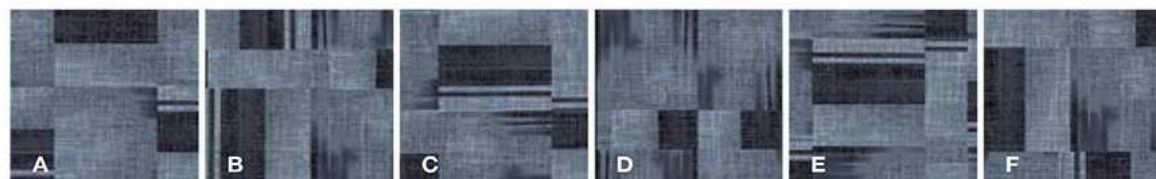


TEXTILE

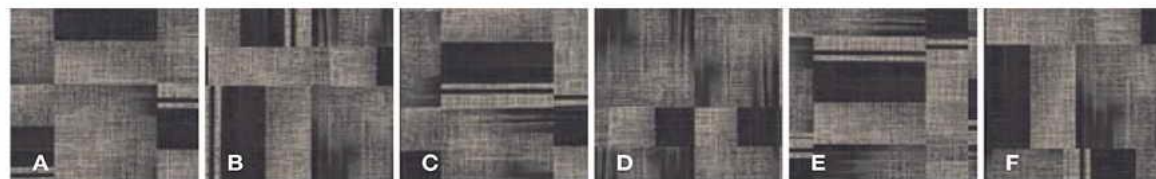
60

60 x 60 tiles

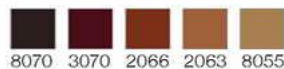
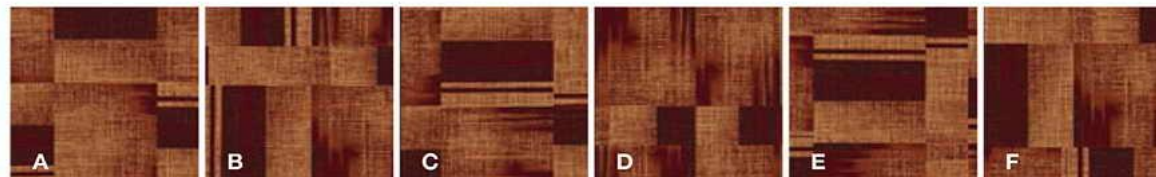
15058-A01



15058-A02

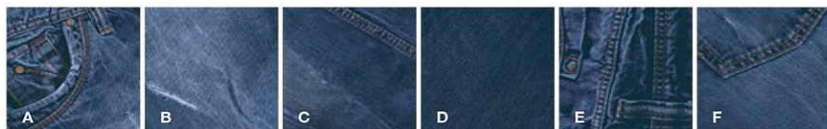


15058-A03

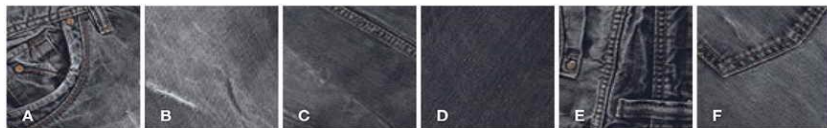


TEXTILE

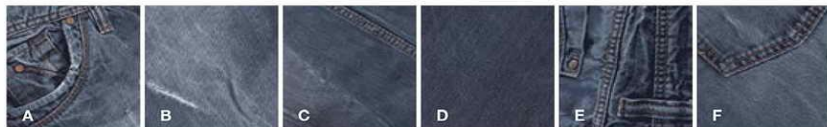
15054-A01



15054-A02

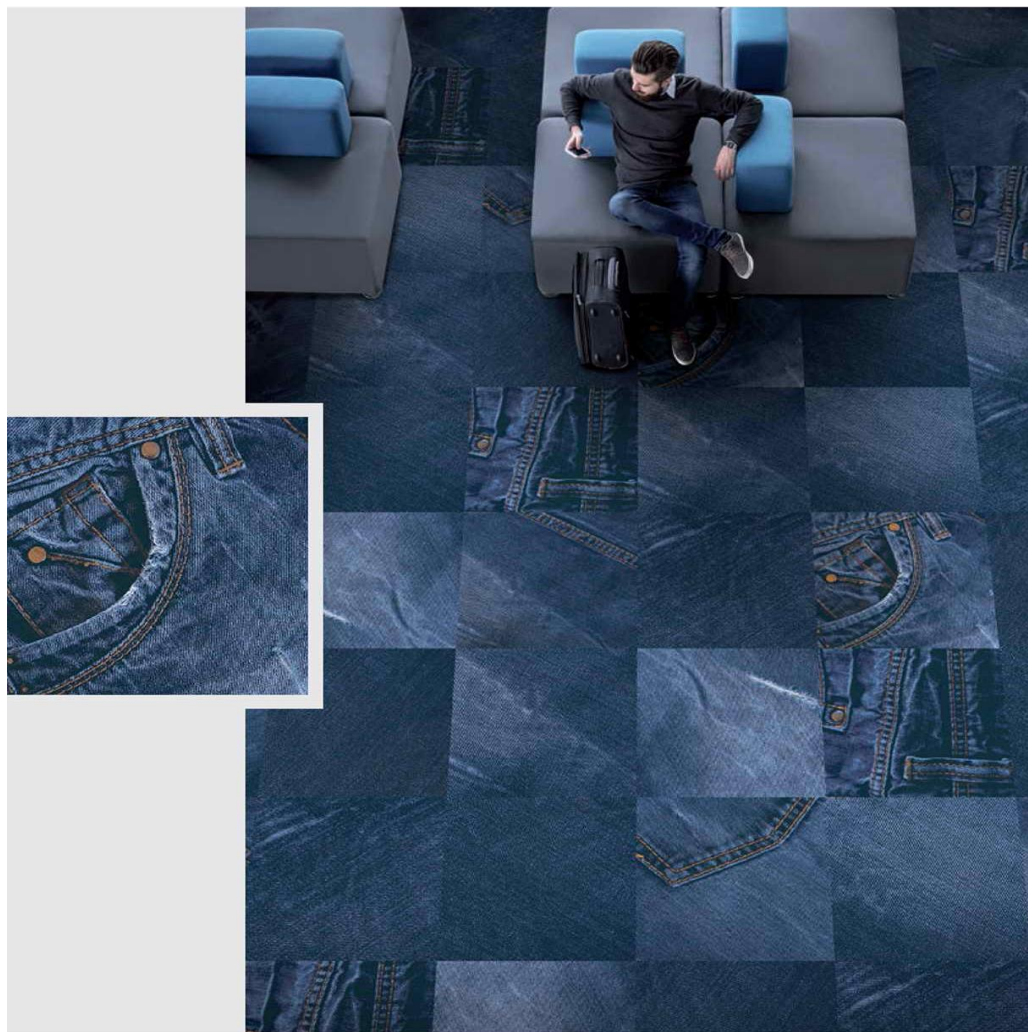


15054-A03



60

60 x 60 tiles



TEXTILE

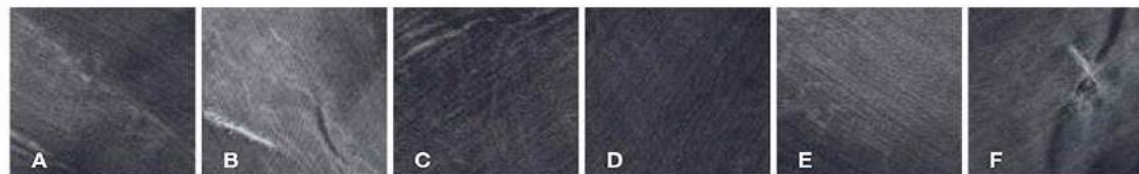
60

60 x 60 tiles

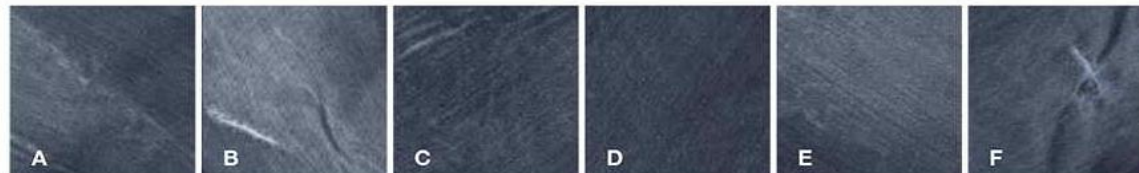
15056-A01



15056-A02



15056-A03



DAS & TO

TILES



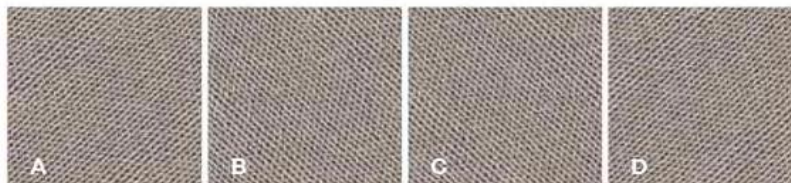
TEXTILE

96 x 96 tiles

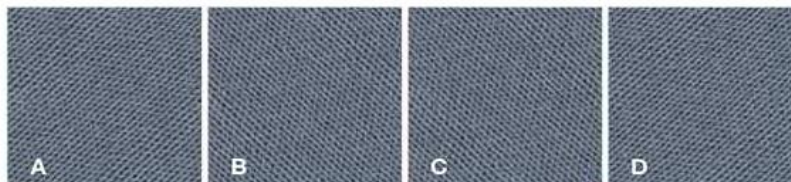
96

TEXTILE

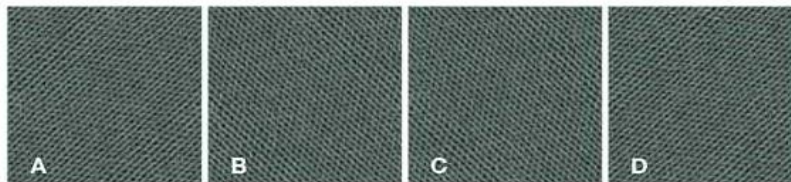
15046-A01



15046-A02



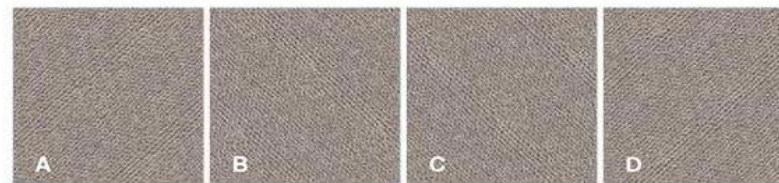
15046-A03



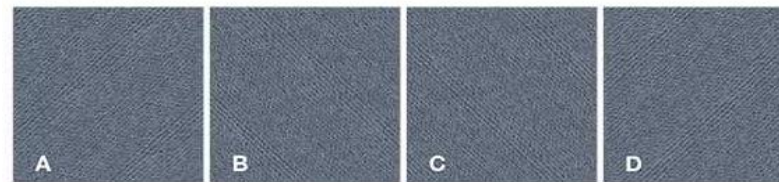
96 x 96 tiles

96

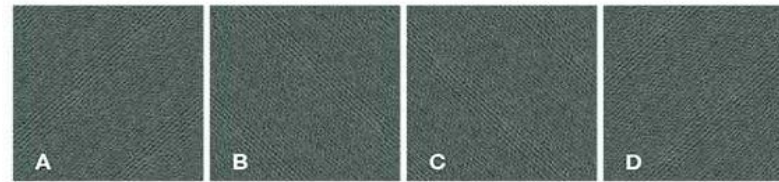
15048-A01



15048-A02



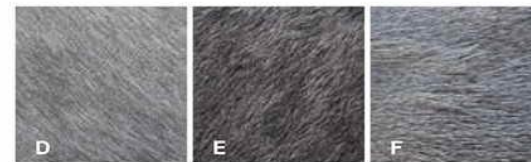
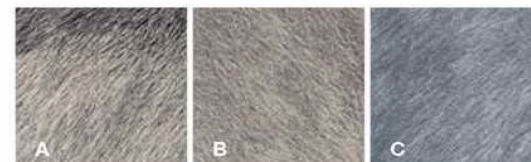
15048-A03



SURFACE



15044-A01

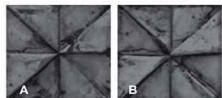


60 x 60 tiles

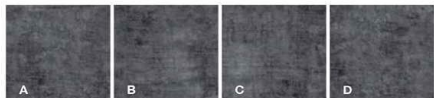
60

SURFACE

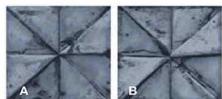
15040-A01



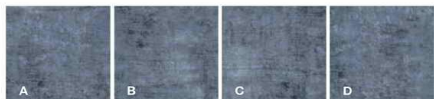
15041-A01



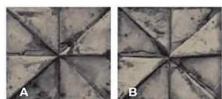
15040-A02



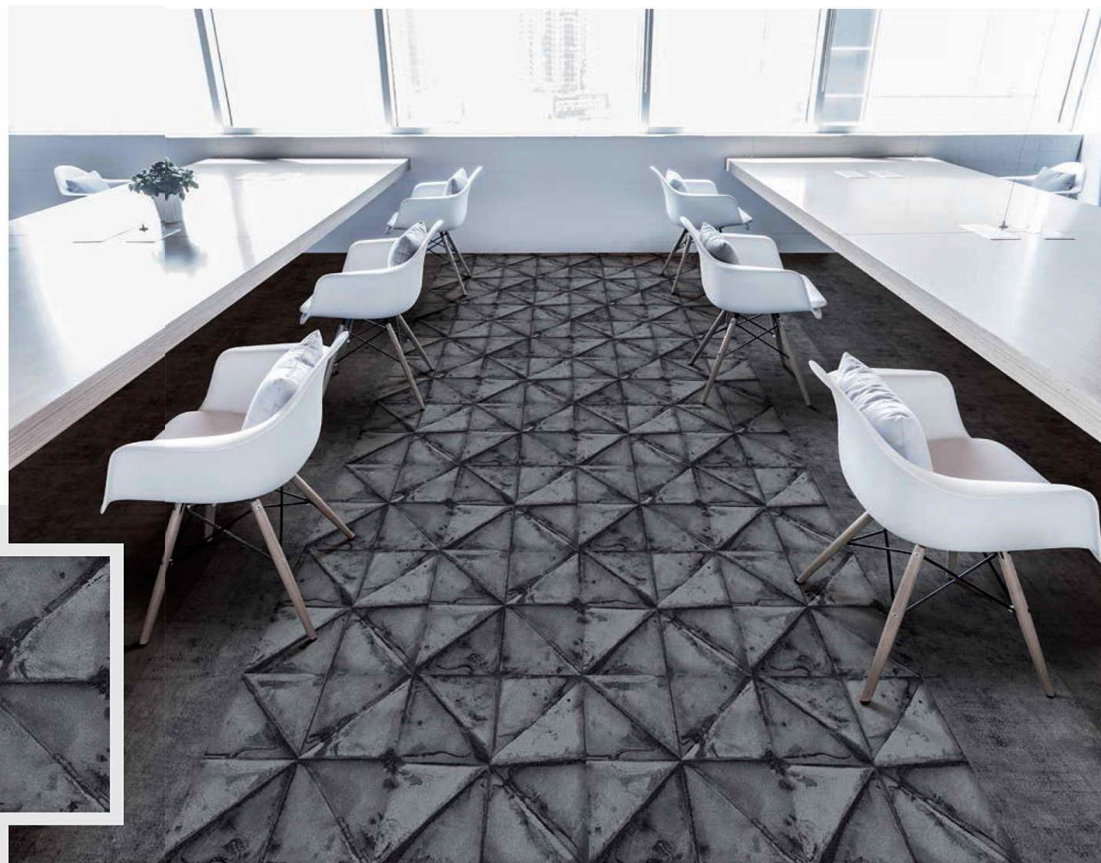
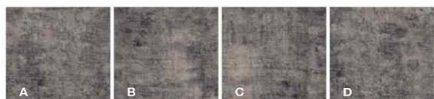
15041-A02



15040-A03



15041-A03



48 x 48 tiles

48



SURFACE

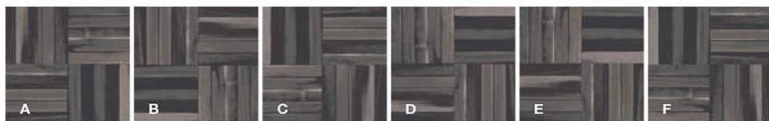
60 x 60 tiles

60

15034-A01



15034-A02



15034-A03



DAS & TO

TILES

SURFACE



48 x 48 tiles

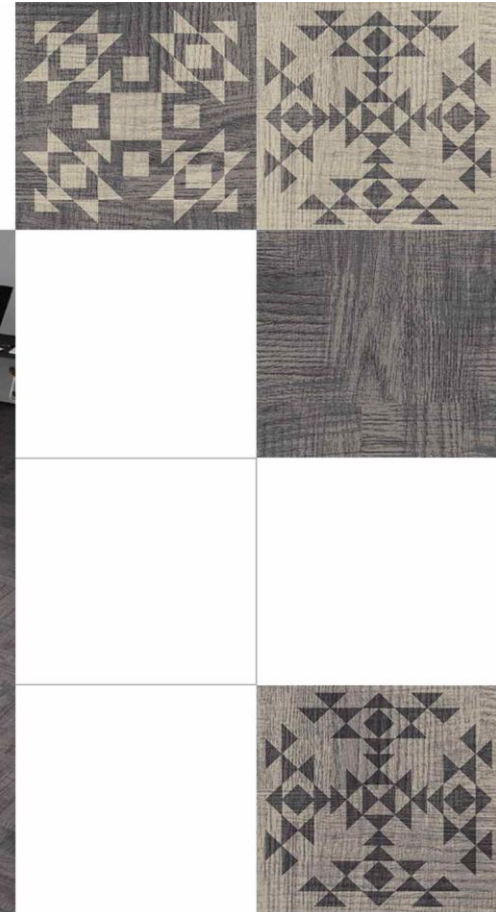
48



SURFACE

48 x 48 tiles

48



SURFACE

48 x 48 tiles

48

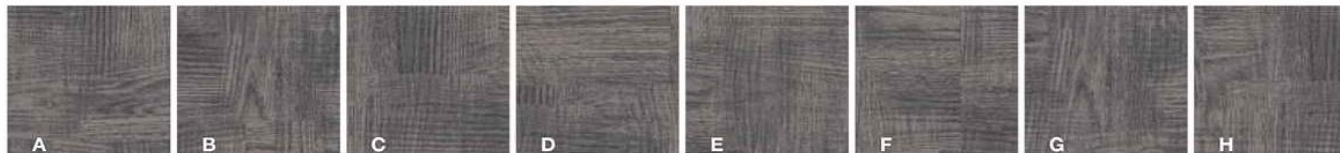
15039-A01



15039-A02



15039-A03



SURFACE

48 x 48 tiles

48

15038-A01



15038-A02



15038-A03

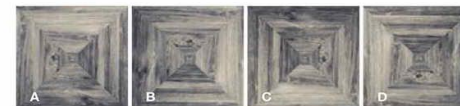




15036-A01



15036-A02



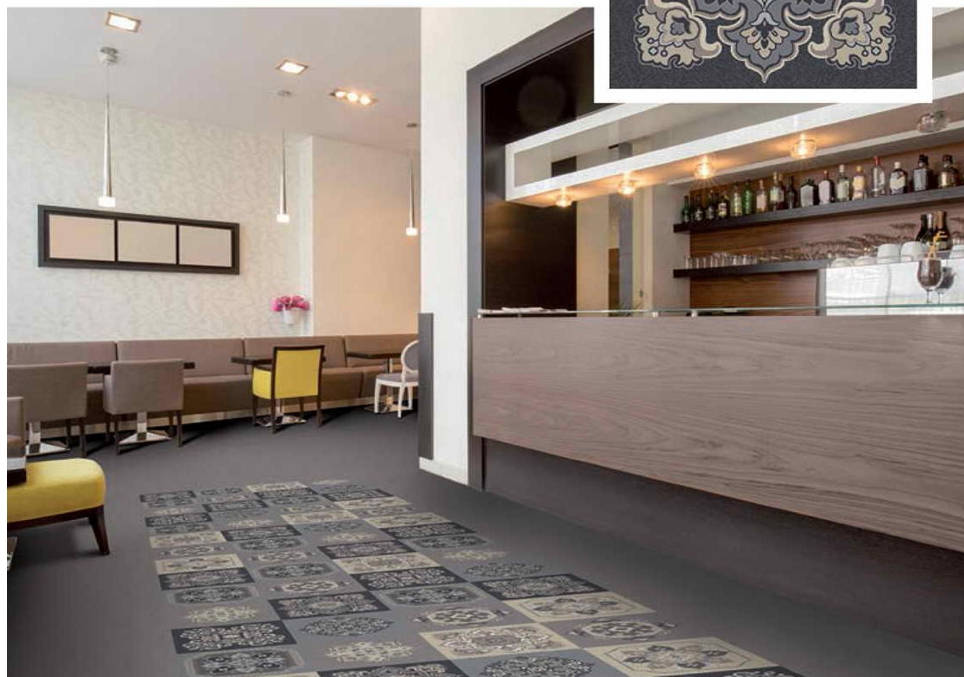
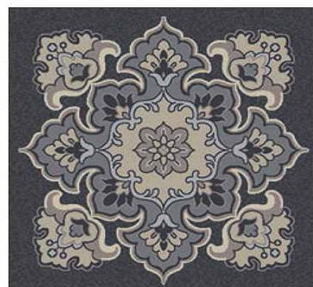
15036-A03



MOSAIC

48

48 x 48 tiles



15021-A01



7052 8071

15021-A02



5073 6052

15021-A03



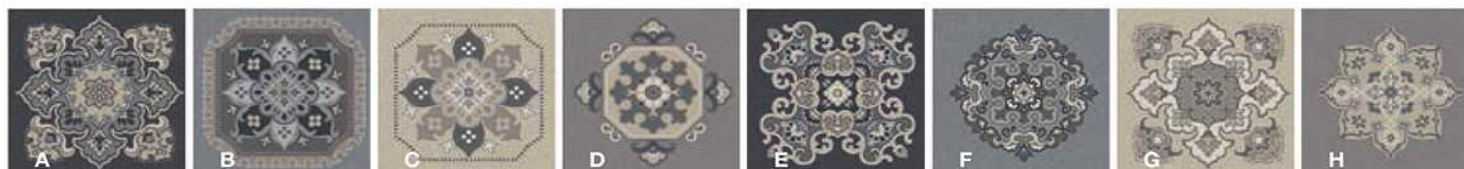
3083 3072

48

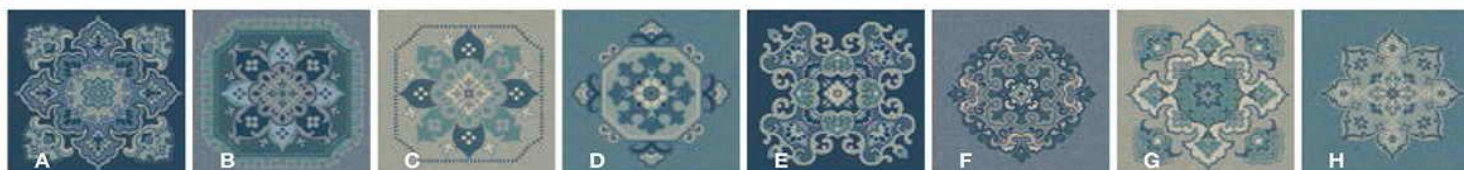
48 x 48 tiles

MOSAIC

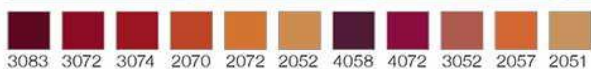
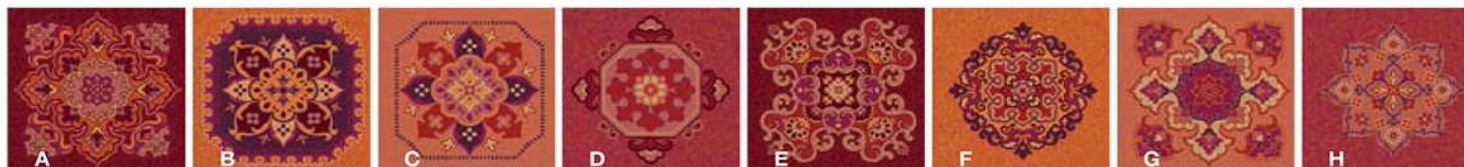
15020-A01



15020-A02



15020-A03



DAS & TO

TILES

The Tile Set Collection **DAS & TO** is designed in such a way that virtually every object is enhanced to a large extent - visually as well as functionally.

You can choose from vast array of hard-wearing styles for highly ergonomic and comfortable surfaces: Art, Art 1050, Art 1250, Art 1400, AP 1050, AP 1150, AP 1250, AP 1400.

Available are backing types Easy Lift 2.5 and Easy Lift Felt 1000g.

Please note that colors in this catalogue are approximate. For correct colors please refer to color samples.

Attention: For technical reasons we cannot completely exclude that the design skips from tile to tile by approx +/- 5 mm. This is not accepted as a reason for a claim and possibly has to be cleared by the layer.

DAS & TO

TILES



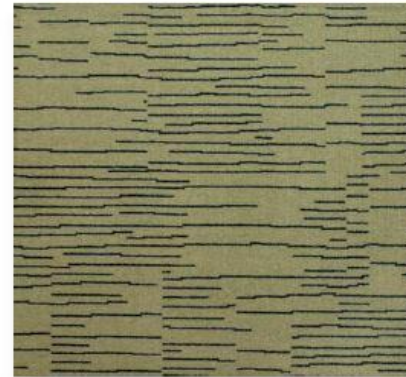
10 20

DT1-10-04



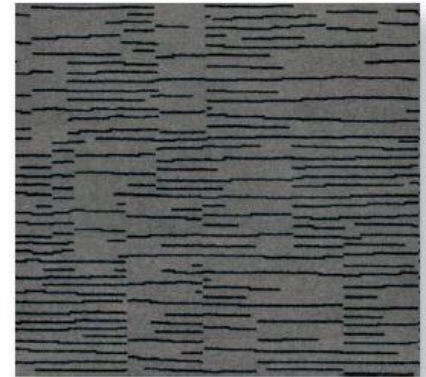
03 20

DT1-10-01



06 10

DT1-10-02



08 11

DT1-10-03



17 20

DT1-10-05



02 20

DT1-10-06



15 11

DT1-10-07

DAS & TO

TILES



06 08 09 10 14 DT1-011-02



03 05 10 14 20 DT1-011-03



01 02 16 17 20 DT1-011-06



08 10 12 17 18 DT1-011-07



08 09 10 19 20 DT1-011-04



03 04 08 19 20 DT1-011-01



08 10 16 17 20 DT1-011-05

DAS & TO

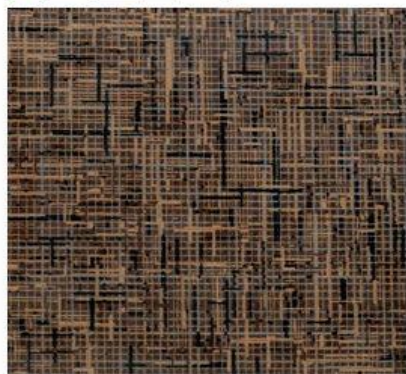
TILES



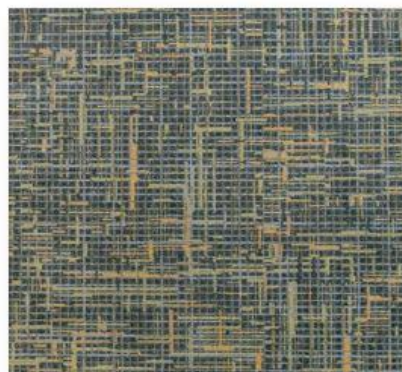
11 08 17 15 20 DT1-013-04



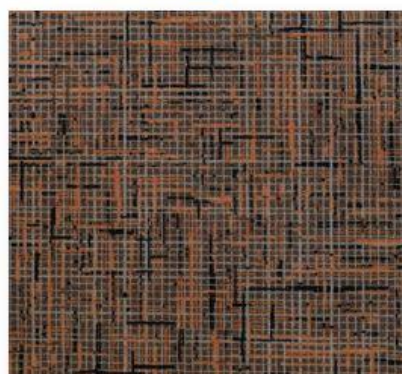
04 03 19 08 11 DT1-013-01



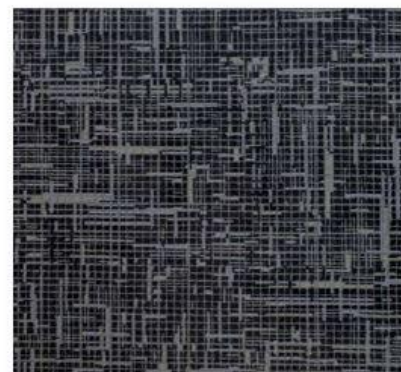
16 17 08 01 20 DT1-013-05



10 08 19 06 14 DT1-013-02



16 17 08 02 20 DT1-013-06



11 08 09 19 05 DT1-013-03



17 12 13 08 15 DT1-013-07

DAS & TO

TILES



14 19 10 06

DT1-015-02



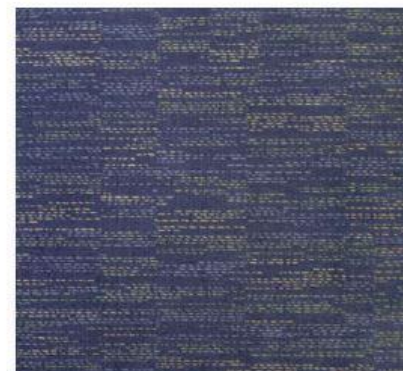
09 19 12 07

DT1-015-03



11 08 19 15

DT1-015-04



03 19 06 13

DT1-015-01



02 08 01 13

DT1-015-06



15 12 07 18

DT1-015-07



17 01 14 12

DT1-015-05

TECHNICAL DATA

Quality		TM1 Easy Lift 3,5	TM1 Easy Lift 2,5	TM1 TB
Construction		Tufted cut pile 1/10"	Tufted cut pile 1/10"	Tufted cut pile 1/10"
Pattern design		Jet Print / Chromojet	Jet Print / Chromojet	Jet Print / Chromojet
Primary backing		Polyester non woven	Polyester non woven	Polyester non woven
Secondary backing		heavy backing	heavy backing	textile backing
Pile layer		100% Polyamide	100% Polyamide	100% Polyamide
Wear Rating	EN 1307 old	extrem (4)	extrem (4)	extrem (4)
	EN 1307 new	Commercial Heavy (33)	Commercial Heavy (33)	Commercial Heavy (33)
Comfort Rating		LC 2	LC 2	LC 2
Total weight	ISO 8543	ca. *3500 g/m ²	ca. *2900 g/m ²	ca. *1530 g/m ²
Overall thickness	ISO 1765	ca. **6,5 mm	ca. **6,5 mm	ca. **6,5 mm
Pile total yarn weight		ca. 630 g/m ²	ca. 630 g/m ²	ca. 630 g/m ²
Pile height above primary backing	ISO 8543	ca. 4,0 mm	ca. 4,0 mm	ca. 4,0 mm
Pile density	ISO 8543	ca. *0,10 g/cm ³	ca. *0,10 g/cm ³	ca. *0,10 g/cm ³
Number of tufts per sqm	ISO 1763	ca. *316000/qm	ca. *316000/qm	ca. *316000/qm
Vertical resistance	EN 1815	<2,0KV	<2,0KV	<2,0KV
Impact sound reduction	ISO 140-8	ca. 25 dB	ca. 25 dB	ca. 25 dB
Thermal resistance	ISO 6356	ca. 0,10 qmK/W	ca. 0,10 qmK/W	ca. 0,10 qmK/W
Construction Certification (Germany)	DIN 14041	Z-156.601-656	Z-156.601-656	Z-156.601-617
Reaction to fire	EN 13501	C(fi)-s1	C(fi)-s1	C(fi)-s1

additional suitability



* tolerances according DIN EN 1307

** +/- 10%



DAS & TO

CARPETS TILES

PE podloga / PE Backing

Filc podloga / Felt Backing



DESIGN VERTIKAL d.o.o.

Dr.Ivana Ribara 66/2,
11070 Beograd, Srbija
Tel./Fax. + 381 11 2280-022;
+ 381 11 400-92-05

E-mail: office@designvertikal.co.rs
www.designvertikal.co.rs